

Digital Elevation Models

NEXTMap Britain

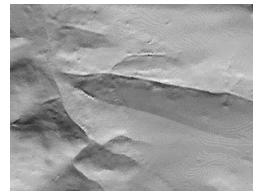
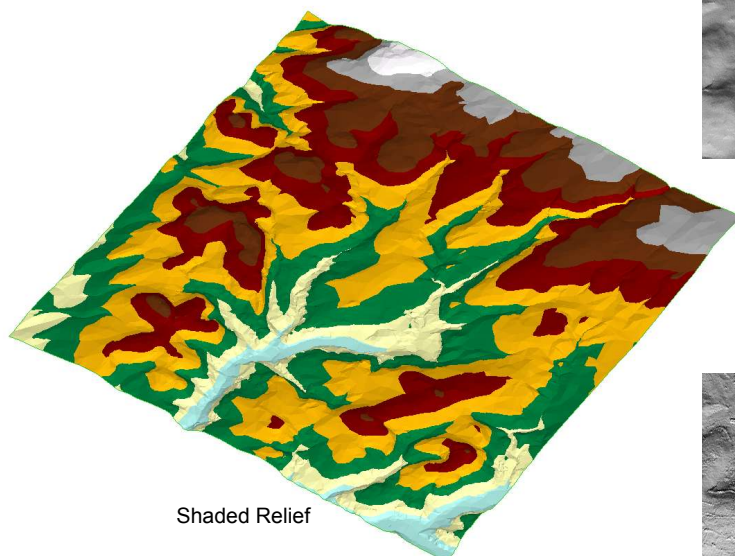
NEXTMap Britain brings you the most current, accurate and affordable digital elevation and image data for England, Wales and Scotland.

The **digital terrain model (DTM)**, **digital surface model (DSM)** and value added products provide powerful datasets for 3D visualisation and GIS based analysis.

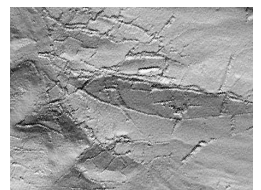
The DTM, commonly known as the 'bald earth' is available in both 5m and 10m post spacing. The DSM, commonly known as the 'canopy model' is available in 5m post spacing. Both datasets have sub-metre vertical accuracy.

Elevation data can be used in a wide range of applications for agriculture, environment and land.

- Environmental monitoring
- Land cover mapping
- Environmental Impact Assessment
- Agricultural planning
- Novel crops assessment
- Site assessment
- Pollution monitoring



DTM



DSM

Environment Systems Limited
8G Cefn Llan Science Park
Aberystwyth
Ceredigion
SY23 3AH
UK

Phone: +44 (0)1970 626688
Email: enquiries@envsys.co.uk

www.envsys.co.uk

© Environment Systems Limited 2006